

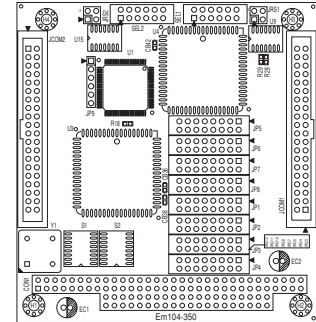
# Em104-LAN10R

NE2000 LAN Module

# Em104-Modem/56K

PC/104 Modem Module

# Em104-350



## Features

- Chipset RTL 8019AS
- Full Duplex transfer mode
- NE2000 compatible with 16 KB RAM

## Specifications

Em104-LAN10R is a high performance, NE2000 compatible, Ethernet adapter. Em104-LAN10R connects to twisted pair (10BASE-T) and coax (10BASE-2) media. It includes a 16 KB RAM buffer for fast and reliable network transmission. Chipset Realtek 8019AS single chip Full-duplex transfer mode, doubles effective bandwidth. NE2000 compatible with built in 16 KB RAM buffer. Jumper select, Jumperless or Plug&Play mode. Media: BNC (10BASE-2) or RJ-45 (10BASE-T), auto. Throughput: 10 Mbps. IRQ: 2 (9), 3, 4, 5, 10, 11, 12 or 15. I/O address: 200h, 220h, 240h, 260h, 280h, 2A0h, 2C0h, 2E0h, 300h, 320h, 340h, 360h, 380h, 3A0h, 3C0h, 3E0h. Boot ROM address: C800, CC00, D000, D800, DC00. 8/16-bit data bus autosensing, Built-in boot ROM function. Power Consumption: single 5V @ 120 mA. Operating temperature: 0 ~ +55°C.

## Ordering Information

Em104-LAN10R  
PC/104 NE2000 LAN Module

## Features

- Data modem throughput up to 115.2Kbps
- Conexant RC56D Chipsets
- Error correction & data compression

## Specifications

Chipset: Conexant RC56D  
ISA Bus Interface  
Data modem throughput up to 115.2Kbps  
V.90, K56Flex, V.34, V.32bis, V.32, V.23, V.22bis, V.22, Bell 212A/Bell 103  
Fax modem send and receive rates up to 14400bps  
Error Correction & Data Compression: MNP2-4(ALT), V42(LAPM)  
Voice/Audio mode  
2M Flash ROM  
FDSP (Full-Duplex speakerphone)  
Hardware & Software flow control  
Programmable volume control  
Stores 2 configuration profiles  
Stores up to 4 telephone numbers  
2W Leased line function  
V 80 Video phone

## Ordering Information

Em104-Modem/56K  
PC/104 Modem Module

## Specifications

4/8 port RS-232 support; channel 1,5 support RS-422 and RS-485  
4 x 16C550 UART RS-232 is a standard serial port, supports Modem device  
IRQ: 3, 4, 5, 7, 9, 10, 11, 12  
IRQ can be selected as shared or independent mode  
I/O address: serial address can be selected by a switch, 200H or above  
Baud rate: 115.2 Kbps  
Power requirement: +5V only  
Operation Temperature: 0~60°C; -40~85°C (Optional)

## Ordering Information

Em104-350-04  
4 port serial module  
Em104-350-08  
8 port serial module